

Inserta Products, Inc.

CHECK VALVES GUIDED DISC THREAD-IN TYPE

INSERTA® IGT (steel) Check Valves, Guided Disc, may be considered as an alternative to standard Inserta® ICT Thread-In Type valves for more demanding applications.

These valves may be used in conjunction with modified SAE J1926-1 ports in manifolds, sub-plates, flanges, and components.

The guided disc design (patent pending) affords improved longevity in applications prone to significant turbulence, as well as in higher cycling and higher flow applications.

With only minor dimensional differences in length only, The IGT Thread-In type valve may often be directly substituted for the ICT valve, including in the Inserta® ICFT 4-Bolt Flange Type Valve Assembly.

The valve components are steel. The valve discs and seats are hardened and flat lapped for positive fluid shut off.

The valve disc may be provided with a customer specified orifice to provide fixed orifice flow control function in the checked direction.



Patent Pending

ORDERING INFORMATION

IGT-A-16-N015-R0

**INSERTA®
CHECK VALVES
GUIDED DISC
THREAD-IN TYPE**

DESIGN CODE

NOMINAL SIZE (Thread Size)

- 16 = 1 5/16 - 12
- 20 = 1 5/8 - 12
- 24 = 1 7/8 - 12
- 32 = 2 1/2 - 12

FLOW CONTROL OPTION

R = FIXED RESTRICTIVE ORIFICE
Ø = DIAMETER (INCH) OF THE FIXED ORIFICE. CUSTOMER MUST SPECIFY THE ORIFICE DIAMETER
SEE "RØ" ON DATA SHEET FOR ORIFICE DATA.
(OMIT FOR STANDARD CHECK VALVE)

CRACKING PRESSURE

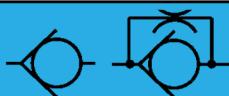
- 003 = 3 PSI
- 007 = 7 PSI
- 015 = 15 PSI (STANDARD)

SEAL COMPOUND

- N = BUNA-N (STANDARD)
- V = VITON

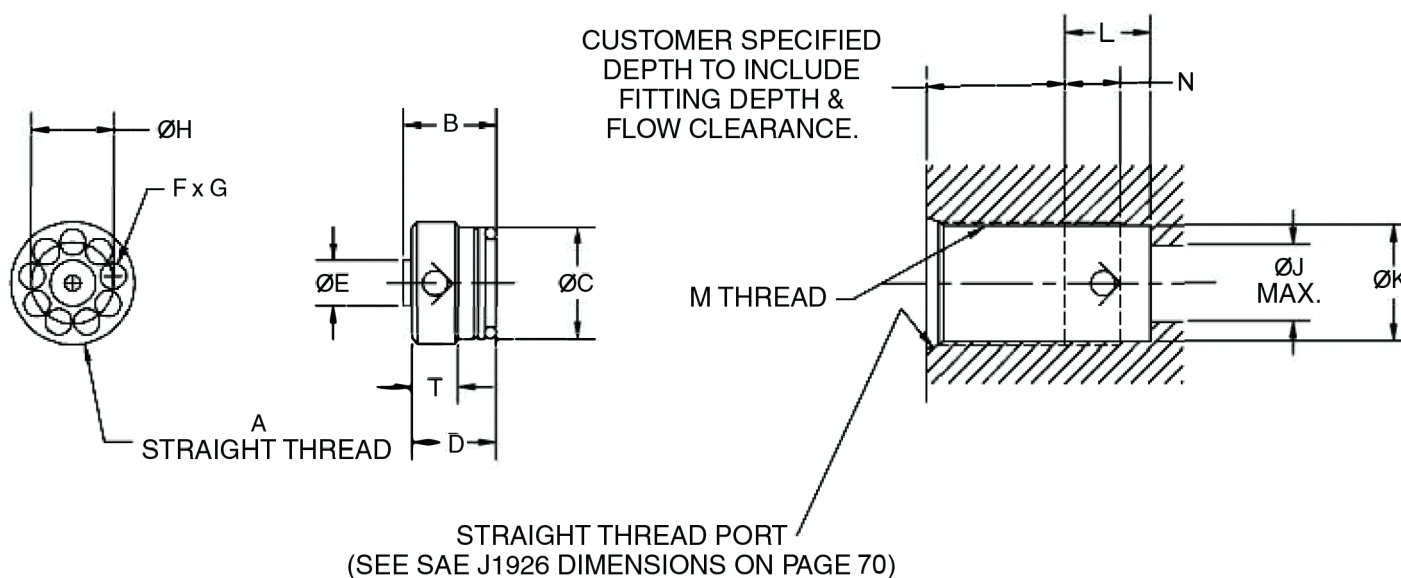
**Inserta Products, Inc.
Blue Bell, Pa. 19422**

**CHECK VALVES
GUIDED DISC
THREAD-IN TYPE**



VALVE SIZE	NOMINAL FLOW (GPM)	VALVE DIMENSIONS									O-RING SIZE NO. (mm)	INSTALLATION TOOL	SEATING TORQUE LB-FT
		A	B	C	D	E	F	G	H	T			
16	35	1 5/16-12	1.024	1.210	.898	0.495	9	.28	.875	.510	213	IMT-D-16	27-29
20	63	1 5/8-12	1.420	1.535	1.420	--	10	.31	1.161	.940	219	IMT-E-20	45-50
24	80	1 7/8-12	1.655	1.769	1.655	--	10	.37	1.340	1.055	222	IMT-E-24	80-90
32	135	2 1/2-12	2.520	2.391	2.520	--	10	.50	1.804	1.750	227	IMT-E-32	90-100

In applications where the valve is subject to sudden shock opening or closing (e.g. Accumulator System) the nominal rated flow must not be exceeded and a minimum cracking pressure of 15 PSI is required.



**SEE PAGE 64 FOR
INSTALLATION TOOL
ORDERING INFORMATION**

VALVE SIZE	MACHINED CAVITY DIMENSIONS				
	J	K -.005	L	M	N
16	.813	1.228	1.024	1 5/16-12	0.904
20	1.031	1.541	1.420	1 5/8-12	1.025
24	1.250	1.798	1.655	1 7/8-12	1.420
32	1.750	2.416	1.520	2 1/2-12	1.750

MOUNTING POSITION:
OPTIONAL
MAXIMUM OPERATING PRESSURE:
6000 PSI (Contact the Factory for Pressures up to 7250 PSI)
TEMPERATURE RANGE:
-40°F (-40°C) To 200°F (93°C)
(Depending on seal material)

OPERATING MEDIUM:
HYDRAULIC FLUID
VISCOSITY RANGE:
50 SSU TO 2000 SSU
CRACKING PRESSURE:
3 PSI, 7 PSI, 15 PSI (STANDARD)

**Inserta Products, Inc.
Blue Bell, Pa. 19422**

**CHECK VALVES
GUIDED DISC
THREAD-IN TYPE**

